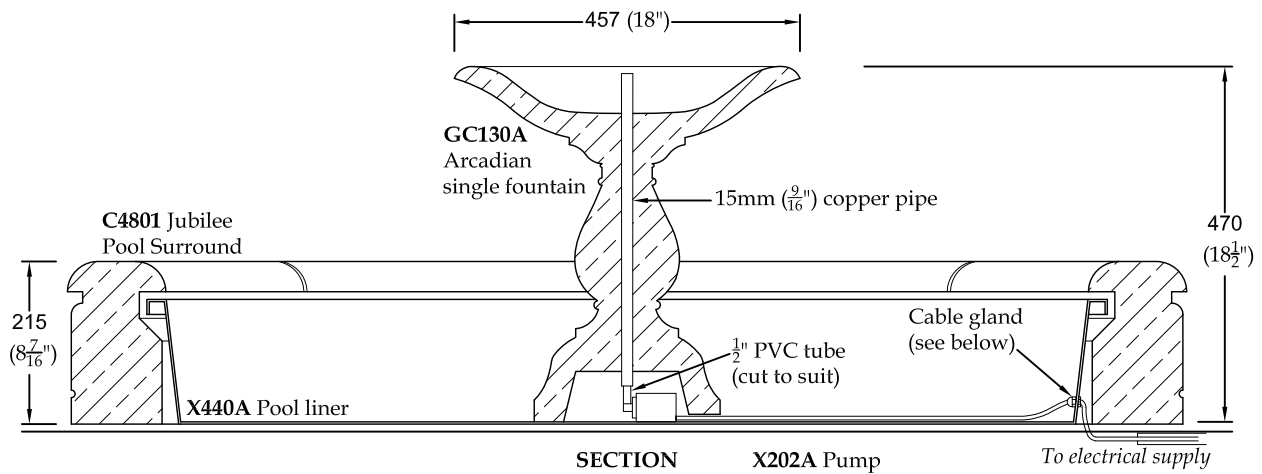


## JUBILEE POOL TYPICAL ASSEMBLY



Cable Gland - Drill liner to suit. Secure gland through liner and seal with silicone sealant (not supplied).

Pass electrical cable through gland and tighten by turning the cap clockwise.

Electrical supply needs to conform with regulations/codes. If in doubt consult a qualified electrician.

To ease connections hot water may be used to soften PVC piping.

Pump and plumbing details are indicative only and may vary from those shown.

To guard against frost damage, drain off water before winter and do not replace until the hard frosts are past in the following spring.